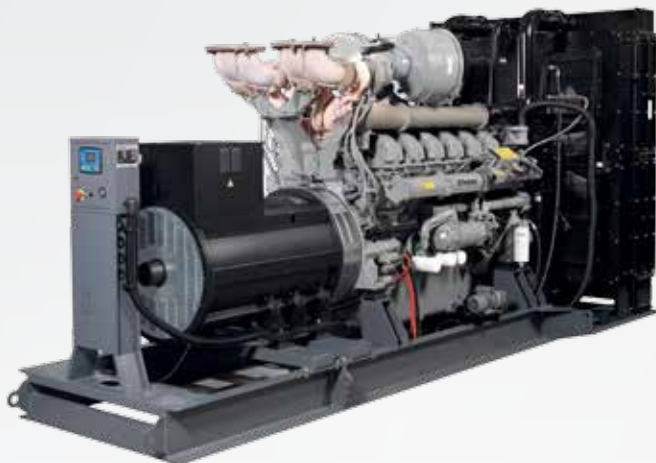


PERKINS 2028-2500 kVA

Technical Specifications



ENGINE

- PERKINS series heavy duty diesel engine
- 4 cycle, water cooled, turbocharged & air to air charge cooled / turbocharged & air to water charge cooled
- Direct injection
- Electronic governor system
- 24 volt self-starter and charger alternator
- Changeable air, fuel and oil filter
- Tropical type radiator
- Flexible fuel pipe
- Oil discharge valve and extension pipe
- Industrial type silencer, exhaust spiral or compensator
- Maintenance free battery
- Engine block water heater (in automatic models)
- Diesel gen-set maintenance and operating instructions and electrical circuit diagram

QUALITY STANDARD

Our gen-sets; VDE 0530, BS 4999, BS 5000, IEC 34, TS ISO 8528, TS EN 12601 are manufactured in accordance with the standards mentioned above. Our company fulfills ISO 9001:2008, ISO 14001:2004, OHSAS 18001:2007 management system requirements, and have the accredited certificates of Kiwa & MEYER. Also we've GOST-R certificate. Our gen-sets have TS ISO 8528-5, TS EN 12601 product standard certificates.

Our gen-sets are CE certified in accordance with the requirements of 2000/14/EC, noise emission directive.

ALTERNATOR

- Brushless, single bearing, flexible disc 4 poles alternator for harmonic failure
- H type isolation class
- IP 21-23 protection class
- Self exciter
- Electronic automatic voltage regulator
- Stator 2/3 step for harmonic failure

EXTRA EQUIPMENTS

- Charge ammeter
- Moulded case circuit breaker (in automatic models)
- Hospital/Critical type silencer
- Sound-proof canopy
- Mobile - trailer
- Synchronization control panel for 2-6 gensets
- 3 pole/4 pole automatic transfer panel (A.T.S.)
- Fuel and oil heater
- Alternator heater
- Automatic fuel filling system
- Fuel-water separator filter

CANOPY

- Modular type sound-proof canopy
- Canopy installation executed with screw and nut, without welding process
- Epoxy and polyester powder painted canopy
- Canopy designed for easy maintenance
- Lockable doors on both sides of canopy
- Emergency stop button
- Transparent panel inspection window

AUTOMATIC CONTROL PANEL

- LCD display screen
- Battery charger
- Hardware and materials needed
- USB port & RS-485 output

GEN-SET SAFETY PROTECTION & ALARMS

- High water temperature
- Low oil pressure
- High & low engine speed
- Low radiator water level
- Over current load
- High & low genset voltage
- Start/stop failure



Easy maintenance canopy design



Refilling from the outside of the canopy



Canopy made of galvanized steel



Warning system for decreasing fuel with electronic fuel level sender



PERKINS Series Diesel Generator Sets 2028-2500 kVA

MODEL			E PR XX 2028	E PR XX 2250	E PR XX 2264	E PR XX 2500	
GROUP	GEN - SET POWER	STAND BY	kVA	2028	2250	2264	2500
			kW	1622	1800	1811	2000
		PRIME	kVA	1844	2000	2058	2250
			kW	1476	1600	1646	1800
	CANOPY DIMENSION (W x L x H) mm			N/A	N/A	N/A	N/A
	CANOPY WEIGHT kg			N/A	N/A	N/A	N/A
	OPEN DIMENSION (W x L x H) mm			2360 x 5800 x 3178	2360 x 5800 x 3178	2360 x 5800 x 3178	2360 x 5800 x 3178
	OPEN WEIGHT kg			12350	12550	12550	12750
ENGINE	CONTAINER DIMENSION (W x L x H) mm			N/A	N/A	N/A	N/A
	CONTAINER WEIGHT kg			N/A	N/A	N/A	N/A
	BRAND			PERKINS	PERKINS	PERKINS	PERKINS
	TYPE			4016TAG1A	4016 - 61TRG2	4016TAG2A	4016 - 61TRG3
	POWER	STAND BY	kW	1690	1895	1886	2083
		PRIME	kW	1537	1684	1715	1875
	SPEED (rpm)			1500	1500	1500	1500
	CYCLE			4	4	4	4
	DISPLACEMENT (lt)			61,123	61,123	61,123	61,123
	NUMBER OF CYLINDERS			16 - 60° V	16 - 60° V	16 - 60° V	16 - 60° V
	BORE AND STROKE (mm x mm)			160 x 190	160 x 190	160 x 190	160 x 190
	COMPRESSION RATIO			13,6 : 1	13,6 : 1	13,6 : 1	13,6:1
	GOVERNOR TYPE			ELECTRONIC			
	INDUCTION			TURBOCHARGED - AIR TO AIR CHARGE COOLED	TURBOCHARGED - AIR TO WATER CHARGE COOLED	TURBOCHARGED - AIR TO AIR CHARGE COOLED	TURBOCHARGED - AIR TO WATER CHARGE COOLED
	COMBUSTION SYSTEM			DIRECT INJECTION			
	COOLING SYSTEM			WATER	REMOTE RADIATOR	WATER	REMOTE RADIATOR
	FUEL CONSUMPTION (lt/h)	100% OF PRIME POWER		370,69	422,00	421,69	470,00
		75% OF PRIME POWER		268,52	318,00	307,19	344,00
		50% OF PRIME POWER		179,02	216,00	203,78	234,00
	TOTAL LUBRICATION SYSTEM CAPACITY (lt)			237,2	237,2	237,2	237,2
TOTAL COOLANT CAPACITY (lt)			316	316	316	260	
FUEL TANK CAPACITY (lt)			3000	3500	3500	4000	

Emsa reserves the right to make changes in model, technical specifications, color, equipment & accessories without prior notice.

N/A: These dimensions and weights may change depending upon the characteristics of the project. Please contact us.